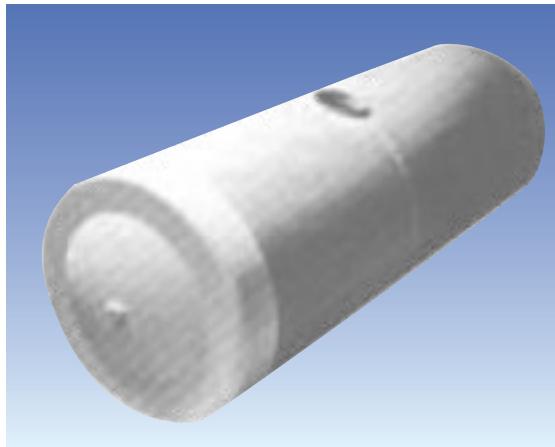


CENTRIFUGALLY CAST HORIZONTAL FIBERGLASS TANKS

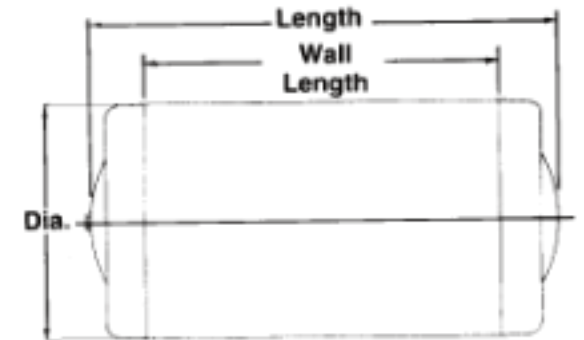


Horizontal fiberglass tanks can be designed for either stationary storage or non/D.O.T. regulated mobile applications. Tanks must be properly supported during use.

Isophthalic resin tanks, through 72" diameter, can be supplied with a variety of sidewall colors and white ends. Please specify when ordering. 90" diameter tanks and all vinylester tanks are natural in color.

Baffles are recommended for mobile applications whenever the tank length to diameter ratio exceeds 1.5.

NOTES: 1) Tanks are designed for atmospheric pressure only and must be vented! Follow vent specifications. 2) 90" diameter tanks have two lifting lugs.



PART No.	NOMINAL CAPACITY (GALS.)	DIAMETER x LENGTH (IN.)	APPROX. WALL LENGTH (IN.)	APPROX. WALL THK. (IN.)	APPROX. WEIGHT (LBS.)	NO. OF SADDLES REQUIRED
	25	23 x 18	8	1/8	22	2
	55	23 x 36	26	1/8	27	2
A1343	65	23 x 42	32	1/8	29	2
A1463	85	23 x 54	44	1/8	34	2
A2223	55	24 x 32	20	1/8	28	2
A2273	65	24 x 37	25	1/8	30	2
A2383	85	24 x 47	36	1/8	34	2
A2513	110	24 x 60	49	1/8	40	2
A2623	130	24 x 71	59	5/32	56	3
A3332	110	30 x 43	30	1/8	46	2
A3472	150	30 x 57	44	1/8	51	2
A3653	200	30 x 75	63	5/32	74	3
A4362	150	32 x 49	32	1/8	53	2
A4513	200	32 x 65	48	5/32	74	2
A4663	250	32 x 79	64	5/32	86	3
A4853	300	32 x 93	78	5/32	109	3
A5202	150	38 x 37	17	1/8	68	2
A5313	200	38 x 48	27	5/32	73	2
A5423	250	38 x 58	38	5/32	82	2
A5533	300	38 x 69	50	5/32	105	2
A5633	350	38 x 79	60	5/32	115	2
A5784	400	38 x 89	70	3/16	147	3
A5834	425	38 x 94	75	3/16	156	3
A6483	350	42 x 66	46	5/32	117	2
A6563	400	42 x 75	55	5/32	127	2

PART No.	NOMINAL CAPACITY (GALS.)	DIAMETER x LENGTH (IN.)	APPROX. WALL LENGTH (IN.)	APPROX. WALL THK. (IN.)	APPROX. WEIGHT (LBS.)	NO. OF SADDLES REQUIRED
A6744	500	42 x 91	70	3/16	170	3
A6834	530	42 x 97	76	3/16	181	3
A7544	500	48 x 73	50	3/16	186	2
A7674	600	48 x 86	63	3/16	206	2
A7855	700	48 x 100	77	7/32	266	3
A7955	800	48 x 112	90	7/32	291	3
A7B25	900	48 x 126	104	7/32	317	4
A7C56	1000	48 x 139	117	9/32	391	4
A8654	1000	60 x 97	60	3/16	393	2
A8765	1100	60 x 105	68	7/32	452	3
A8865	1200	60 x 113	77	7/32	476	3
A8955	1300	60 x 122	86	7/32	498	3
A8A35	1400	60 x 130	94	7/32	517	3
A8B26	1500	60 x 138	102	9/32	590	3
A8F66	2000	60 x 180	145	9/32	718	4
AF655	1500	72 x 102	61	7/32	661	2
AF985	2000	72 x 131	90	7/32	756	3
AFC87	2500	72 x 160	120	5/16	990	3
AFG18	3000	72 x 189	149	3/8	1211	4
A9215	1000	90 x 54	16	7/32	603	2
A9585	2000	90 x 91	53	7/32	735	2
A9956	3000	90 x 128	90	1/4	945	2
A9D28	4000	90 x 165	127	11/32	1418	2
A9G9A	5000	90 x 202	164	13/32	1995	2
A9K6C	6000	90 x 239	200	1/2	2649	2

FLAT BOTTOM ANNULAR DOMED TOP



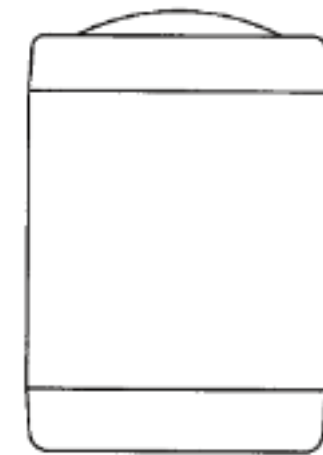
CENTRIFUGALLY CAST FLAT BOTTOM, ANNULAR DOMED TOP FIBERGLASS TANKS

PART NO.	NOMINAL CAPACITY (GAL.)	DIAMETER X HEIGHT (IN.)	APPROX. WALL THICKNESS (IN.)	APPROX. WEIGHT (LBS.)	PART NO.	NOMINAL CAPACITY (GAL.)	DIAMETER X HEIGHT (IN.)	APPROX. WALL THICKNESS (IN.)	APPROX. WEIGHT (LBS.)
D2243	60	24 x 34	1/8	32	D7413	425	48 x 61	5/32	172
D2503	110	24 x 60	1/8	47	D7473	475	48 x 67	5/32	188
D2813	160	24 x 87	1/8	61	D7613	575	48 x 80	5/32	207
D3163	70	30 x 28	1/8	40	D7784	675	48 x 93	7/32	238
D3333	120	30 x 45	5/32	55	D7914	775	48 x 106	7/32	250
D3533	170	30 x 63	5/32	72	D7A44	875	48 x 120	7/32	272
D3643	200	30 x 75	5/32	85	D7C44	1025	48 x 139	7/32	306
D4133	75	32 x 26	5/32	41	D8434	690	60 x 65	7/32	331
D4283	125	32 x 41	5/32	59	D8554	830	60 x 77	7/32	356
D4423	175	32 x 55	5/32	72	D8674	990	60 x 91	7/32	380
D4583	225	32 x 70	5/32	81	D8834	1115	60 x 101	7/32	405
D4733	275	32 x 84	5/32	102	D8954	1250	60 x 112	7/32	429
D4813	290	32 x 89	5/32	106	D8B94	1540	60 x 139	7/32	478
D5183	145	38 x 34	5/32	71	D8C94	1660	60 x 147	7/32	499
D5293	195	38 x 44	5/32	85	DF354	1000	72 x 66	7/32	488
D5393	245	38 x 55	5/32	98	DF654	1500	72 x 96	7/32	560
D5493	295	38 x 65	5/32	111	DF994	2000	72 x 124	7/32	641
D5603	345	38 x 76	5/32	127	DFD24	2500	72 x 153	7/32	720
D5703	395	38 x 86	5/32	143	DFG84	3000	72 x 182	7/32	806
D5803	425	38 x 92	5/32	149	D9224	1000	90 x 47	3/16	557
D6243	205	42 x 39	5/32	98	D9414	1500	90 x 66	3/16	613
D6333	255	42 x 48	5/32	110	D9594	2000	90 x 84	3/16	693
D6413	305	42 x 56	5/32	121	D9725	2500	90 x 103	3/16-1/4	763
D6503	355	42 x 65	5/32	132	D9925	3000	90 x 121	3/16-1/4	853
D6593	405	42 x 73	5/32	143	D9A56	3500	90 x 140	3/16-5/16	947
D6683	455	42 x 82	5/32	155	D9C96	4000	90 x 158	3/16-5/16	1071
D6803	505	42 x 90	5/32	168	D9C18	4500	90 x 177	3/16-3/8	1183
D7213	275	48 x 41	5/32	134	D9E58	5000	90 x 196	3/16-3/8	1339
D7273	325	48 x 48	5/32	146	D9G88	5500	90 x 214	3/16-3/8	1489
D7343	375	48 x 54	5/32	158	D9J18	6000	90 x 233	3/16-3/8	1596

Flat Bottom Annular Dome Top Tanks are totally enclosed and are designed for chemical and water storage applications requiring a dust-free environment.

Annular head configuration allows for easy fitting installation.

Isophthalic resin tanks, through 72" diameter are supplied with aqua sidewall and white ends. 90" diameter tanks and all vinylester resin tanks are natural in color.



NOTES: 1. Enclosed tanks are designed for atmospheric pressure only and must be vented!
2. 90" diameter tanks 2000 gallon and below, have two lifting lugs. All other 90" tanks have three lugs included.