



# AquaDot Corrugated Water Tanks

## Durable | Reliable | Affordable

AquaDot Tanks are made for locations that experience little to light snow load, and are typically available at half the price of the competitors. Unlike other manufacturers that cut costs by offering lower grades of metal for tank panels, we use galvanized steel to ensure a long tank life. The tanks come with a polyethylene liner that's been tested and approved for safe drinking water storage (NSF 61).

Put 30+ years of making quality corrugated water tanks to work for you!

Appropriate for municipal, agricultural and industrial projects, our corrugated steel tanks are used for a variety of projects with a wide range of applications:

- Rainwater Collection
- Fire Water Storage
- Irrigation Water Storage
- Agriculture
- Drinking Water Storage
- Process Water Storage
- Bulk materials and dry goods
- Frac Storage Tanks



## **Durable | Reliable | Affordable**

Since 1986, when we installed our very first Poly Lined Steel Water Tank, AquaDot has set the standard in cost efficient large volume water tanks by designing and manufacturing tanks that are transported inexpensively anywhere in the world and assembled in a day in most cases by trained and qualified installers.



## **The Right Choice**

AquaDot's range of Poly Lined Steel Water Tanks combine the proven durability and strength of corrugated galvanized steel with a safe and reliable polyethylene lining to create the most efficient and affordable large volume water tank available today.



## **Galvanized Walls**

Today there are other suppliers of Poly Lined Steel Water Tanks, many claiming that GALVALUME® (aka ZINCALUME®) steel will outlast Galvanized materials in this application. Simply put, AquaDot knows this is not true.



## **Polyethylene Liner**

An AquaDot tank liner is manufactured and tested in our state of the art manufacturing facility. Our solid Polyethylene liner has been tested and approved for the safe storage of drinking water in accordance with NSF 61.



## **Geotextile Underlay**

Every AquaDot water tank is supplied and fitted with a Geotextile Tank Liner Underlay which provides the ultimate protection against liner damage from imperfections in the tank base for the life of the tank.





## Moisture Barrier

For added protection, AquaDot install a moisture barrier underneath the tank wall. Made from a durable and UV resistant geomembrane, the moisture barrier also assists to prevent base erosion and makes an excellent salt barrier.



## Secure Access

AquaDot's heavy duty 30" wide (40" across the diagonal) hinged lockable roof access hatch with removable ladder ensures safe access when needed and security against unwanted access.



## Light Proof Inlet

AquaDot's large volume 20" Leaf Strainer Inlet includes a Light Guard which is placed under the inlet screen to prevent sunlight entering the tank providing a simple yet effective way to eliminate algae growth.



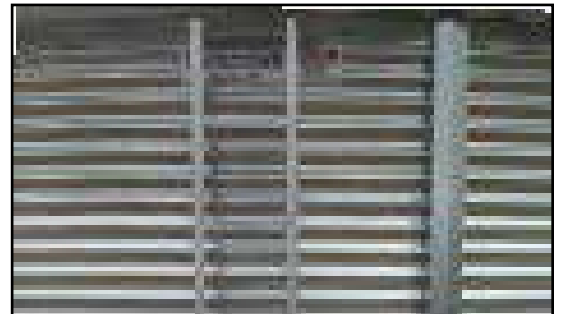
## 6" Overflow

AquaDot's 6" Overflow assembly is fitted with an internal elbow to maximize storage capacity and the flap valve with mozzie proof screen ensures there is no access into the tank.



## Removable Ladder

AquaDot's light duty ladder hooks onto the tank wall via a specially designed ladder bracket installed under the access hatch. This means the ladder can be removed when not in use to prevent unwanted access. A second ladder bracket is installed under the roof inlet to provide safe access to the inlet strainer basket.



## Roof Seal

By installing a specially formulated foam strip between the top of the tank wall & under the corrugated roof sheets, we protect your stored water from dust, frogs and most insects.



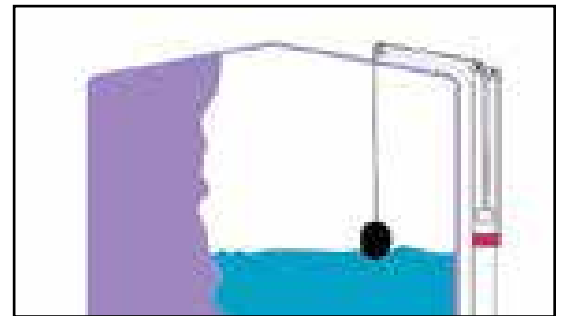
## Rainsaver Gutter

AquaDot offers a unique water catchment system for the roof of their water tank. Rainsaver caps are placed at the end of each roof sheet to redirect the rainwater into the tank harvesting thousands of gallons of precious rainwater that would otherwise go to waste.



## Level Indicator

The 'Liquidator' Level Indicator was designed over 15 years ago and has proven itself to be the most simple, reliable and accurate water level gauge on the market.



## Optional Facia

AquaDot can install an optional facia around the perimeter of the roof to protect horses and other tall animals from cutting themselves on the edge of the roofing iron. It also enhances the appearance of your tank.



## 20 year warranty

AquaDot's 20 year 'No Service Costs' Pro-Rata Warranty leads the industry and is supported by over 30 years of experience choosing the right materials to survive the toughest of conditions.



For more complete information on One Clarion products and solutions, visit us on the web at: [www.clarionmunicipal.com](http://www.clarionmunicipal.com) or call us at : [\(+1\) 863-261-8388](tel:+18632618388) | [info@oneclarion.com](mailto:info@oneclarion.com)

© 2024 One Clarion. All rights reserved. One Clarion terms and conditions apply.

