

PRELIMINARY DESIGN NOT APPROVED FOR CONSTRUCTION

STANDARD TANK COLORS

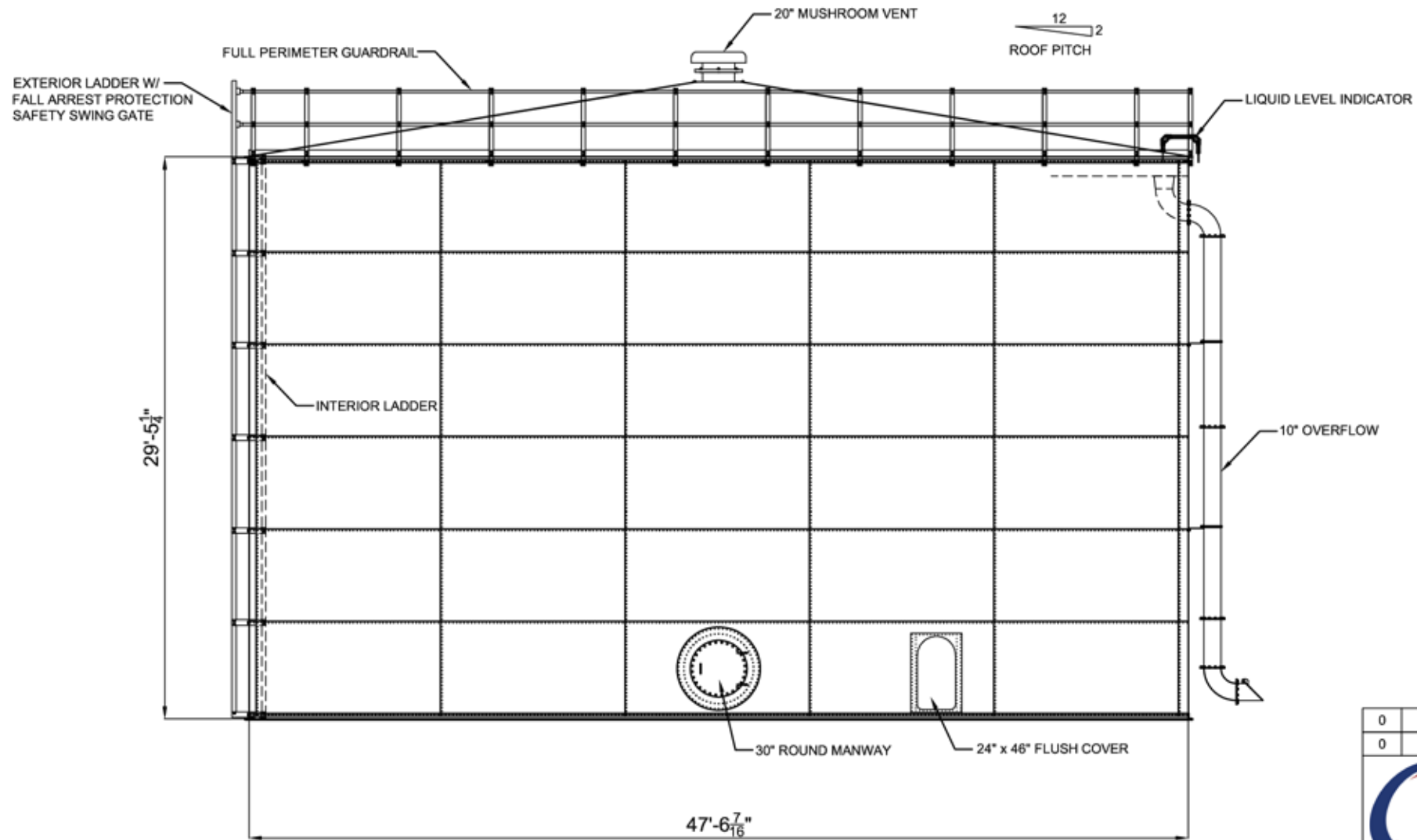
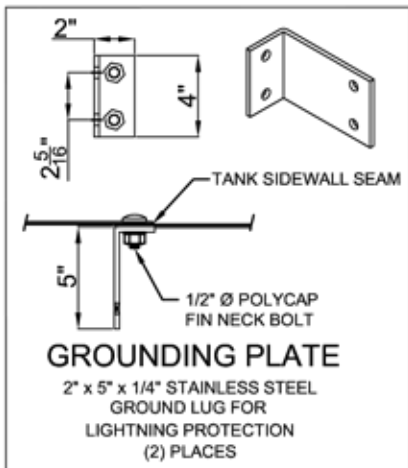
INTERIOR OF TANK SHALL BE WHITE

- TAN
- BLUE
- WHITE
- HUNTER GREEN
- COBALT BLUE
- NON STANDARD COLOR

EXTERIOR LADDER

- TANK COLOR
- GALVANIZED
- SAFETY YELLOW

GALVANIZED GUARDRAIL
SAFETY YELLOW SAFETY SWING GATE

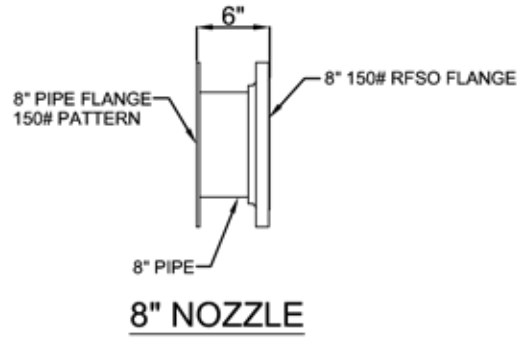
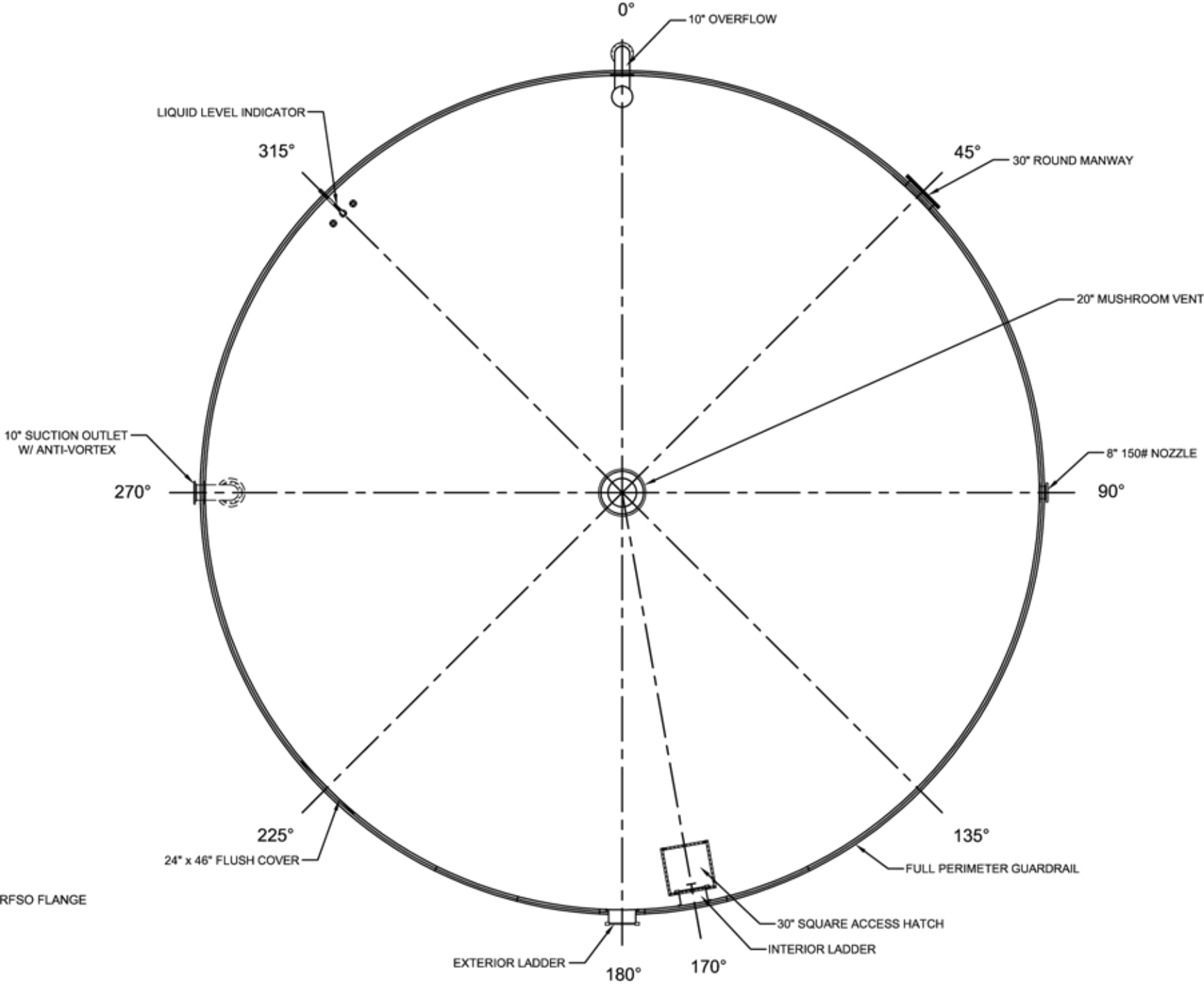
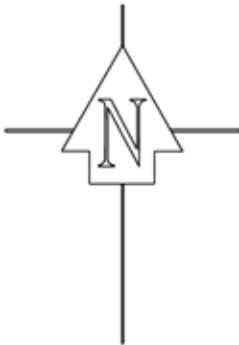


ELEVATION VIEW

0	DATE:	BY:	REVISION:
0	DATE:	BY:	REVISION:
UNLESS OTHERWISE SPECIFIED TOLERANCES:		ISSUED FOR SUBMITAL:	-
FRACTIONAL ± 1/16		ISSUED FOR MANUFACTURING:	-
ONE PLACE DECIMAL ± 0.060		ISSUED FOR CONSTRUCTION:	-
TWO PLACE DECIMAL ± 0.030		PROJECT MANAGER:	-
THREE PLACE DECIMAL ± 0.010			
PRE-SUBMITTAL DRAWING ELEVATION VIEW		JOB #:	PER-SUBMITTAL
		COVERAGE:	16 @ 112
		TANK SIZE:	47.54' x 29.44'
CUSTOMER:		FINISH:	-
LOCATION: TYPICAL ALL SITES		SCALE:	
DRAWN BY:	MPH 5/9/2019	SHEET 1 OF 1	DO NOT SCALE THIS DRAWING
CHECKED BY:	-	PRE-SUBMITTAL 01	
APPROVED BY:	-		
			REV. 0

For more complete information on One Clarion products and solutions, visit us at www.clarionmunicipal.com.
 Phone: (+1) 863-261-8388 | info@oneclarion.com | © 2023 One Clarion. All rights reserved. One Clarion terms and conditions apply.

PRELIMINARY DESIGN NOT APPROVED FOR CONSTRUCTION

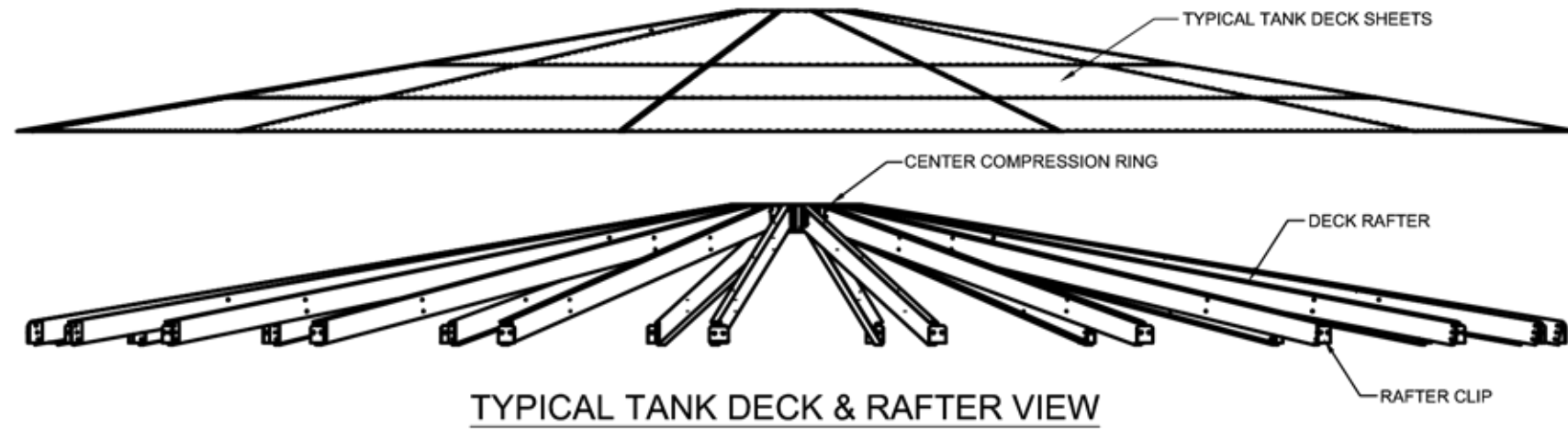


PLAN VIEW

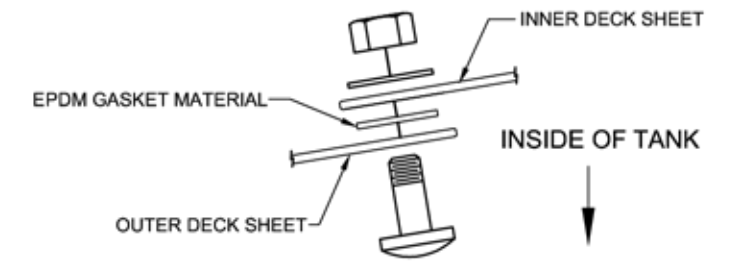
0	DATE:	BY:	REVISION:
0	DATE:	BY:	REVISION:
UNLESS OTHERWISE SPECIFIED TOLERANCES: FRACTIONAL $\pm \frac{1}{16}$ ONE PLACE DECIMAL ± 0.060 TWO PLACE DECIMAL ± 0.030 THREE PLACE DECIMAL ± 0.010		ISSUED FOR SUBMITAL:	-
		ISSUED FOR MANUFACTURING:	-
		ISSUED FOR CONSTRUCTION:	-
		PROJECT MANAGER:	-
PRE-SUBMITTAL DRAWING PLAN VIEW		JOB #:	PER-SUBMITTAL
		COVERAGE:	16 @ 112
		TANK SIZE:	47.54' x 29.44'
CUSTOMER:			FINISH:
LOCATION:	TYPICAL ALL SITES		SCALE:
DRAWN BY:	MPH 5/9/2019	SHEET 1 OF 1	DO NOT SCALE THIS DRAWING
CHECKED BY:	-	PRE-SUBMITTAL 02	
APPROVED BY:	-		
			REV. 0

For more complete information on One Clarion products and solutions, visit us at www.clarionmunicipal.com.
 Phone: (+1) 863-261-8388 | info@oneclarion.com | © 2023 One Clarion. All rights reserved. One Clarion terms and conditions apply.

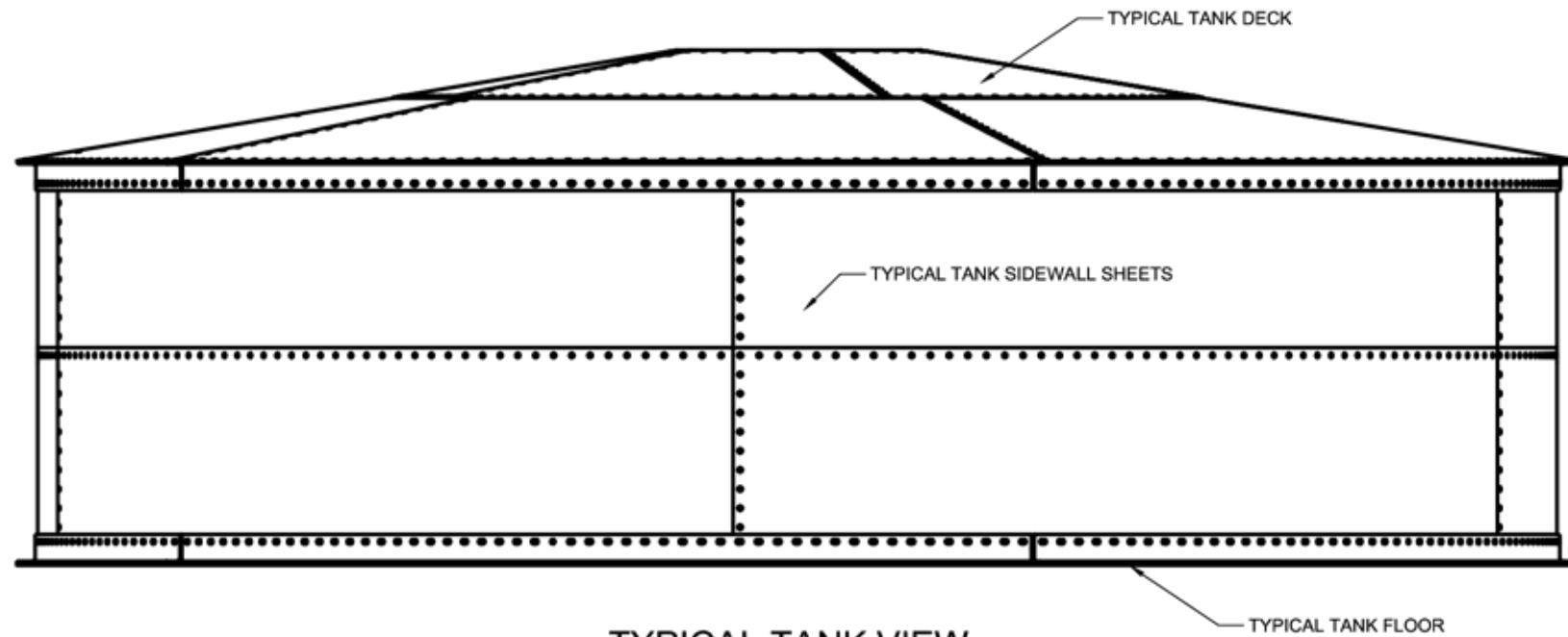
PRELIMINARY DESIGN NOT APPROVED FOR CONSTRUCTION



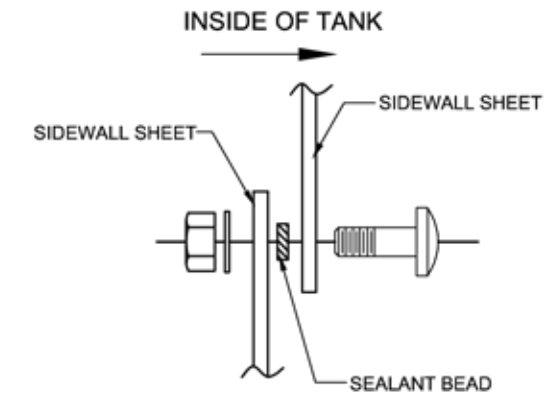
TYPICAL TANK DECK & RAFTER VIEW



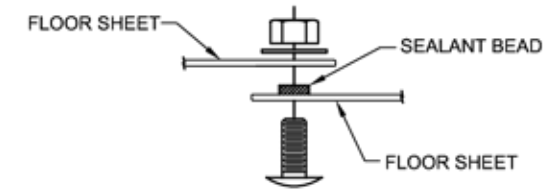
DECK EXPLODED VIEW



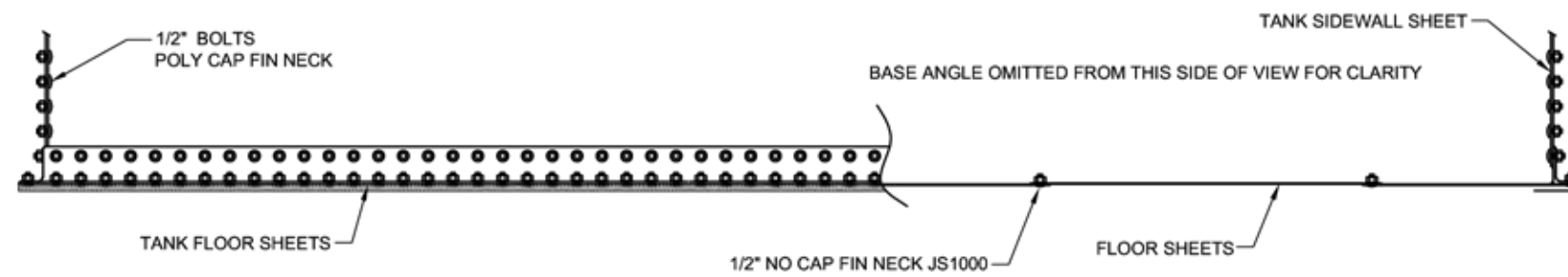
TYPICAL TANK VIEW



SIDEWALL VIEW



FLOOR EXPLODED VIEW



TYPICAL TANK BASE ANGLE & FLOOR VIEW



UNLESS OTHERWISE SPECIFIED
 TOLERANCES:
 FRACTIONAL $\pm \frac{1}{16}$
 ONE PLACE DECIMAL ± 0.060
 TWO PLACE DECIMAL ± 0.030
 THREE PLACE DECIMAL ± 0.010

ISSUED FOR SUBMITAL:	-
ISSUED FOR MANUFACTURING:	-
ISSUED FOR CONSTRUCTION:	-
PROJECT MANAGER:	-

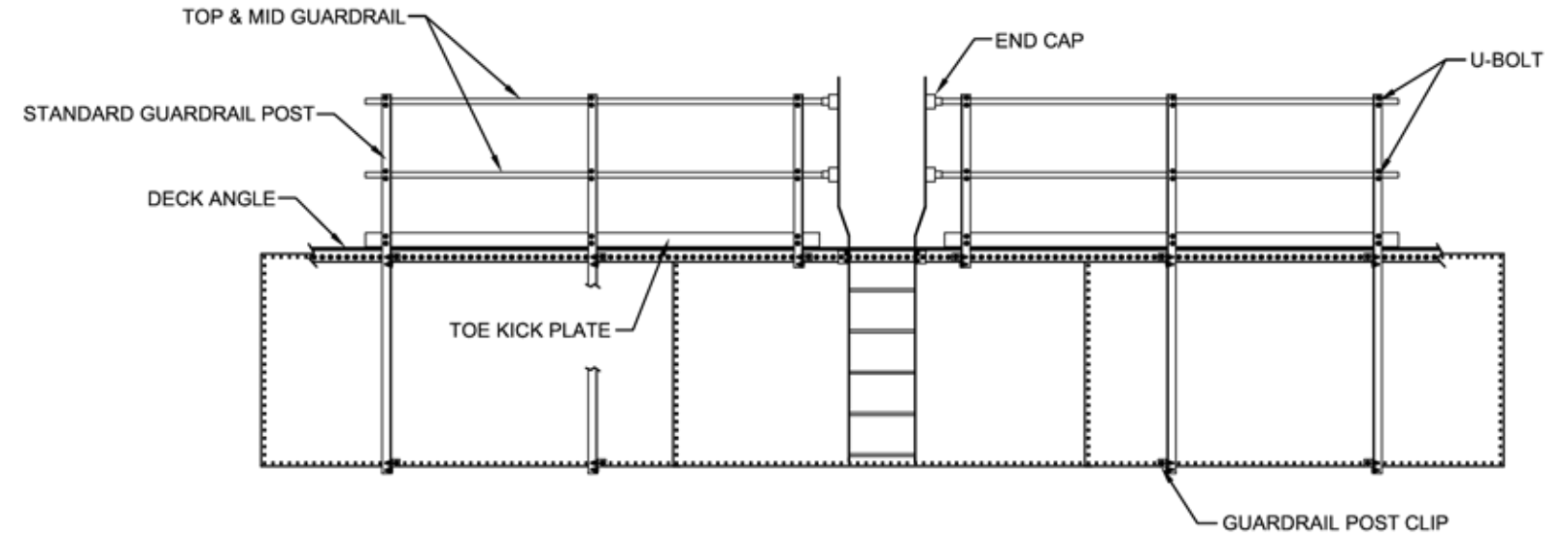
TYPICAL PRE-SUBMITTAL DETAILS		JOB #:	PER-SUBMITTAL
TANK ASSEMBLY		COVERAGE:	-
		TANK SIZE:	-
		FINISH:	-

CUSTOMER:	-	SCALE:	
LOCATION:	TYPICAL ALL SITES		
DRAWN BY:	MPH 10/02/2017	SHEET 1 OF 1	DO NOT SCALE THIS DRAWING
CHECKED BY:	-		
APPROVED BY:	-	PRE-SUBMITTAL 02	REV. 0

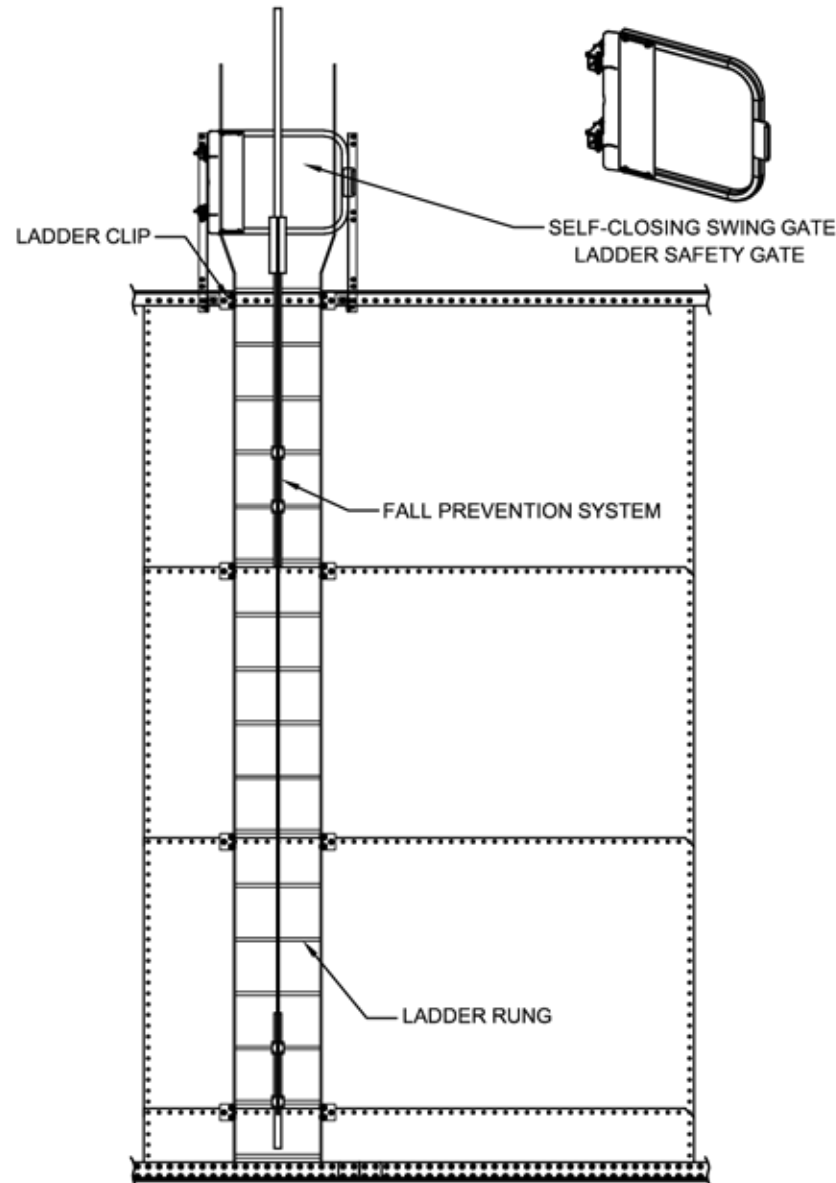
NOTES:
 THIS IS A TYPICAL DETAIL
 COMPLIES WITH OSHA STANDARDS
 FALL PREVENTION IS ONLY REQUIRED ON TANKS 24' AND TALLER
 ALL EXTERIOR LADDERS WILL REQUIRE SELF-CLOSING GATE AT ACCESS POINTS

FALL PREVENTION SYSTEM:
 1 UNIVERSAL HARNESSES (LG-XL)
 GALVANIZED CABLE WITH GUIDES
 1 MANUAL PASS-THROUGH CABLE SLEEVES
 5' EXTENSION TOP BRACKET
 BOTTOM BRACKET WITH TENSIONER
 SAFETY GATE AT TOP OF LADDER / GUARDRAIL
 1 EQUIPMENT BAGS

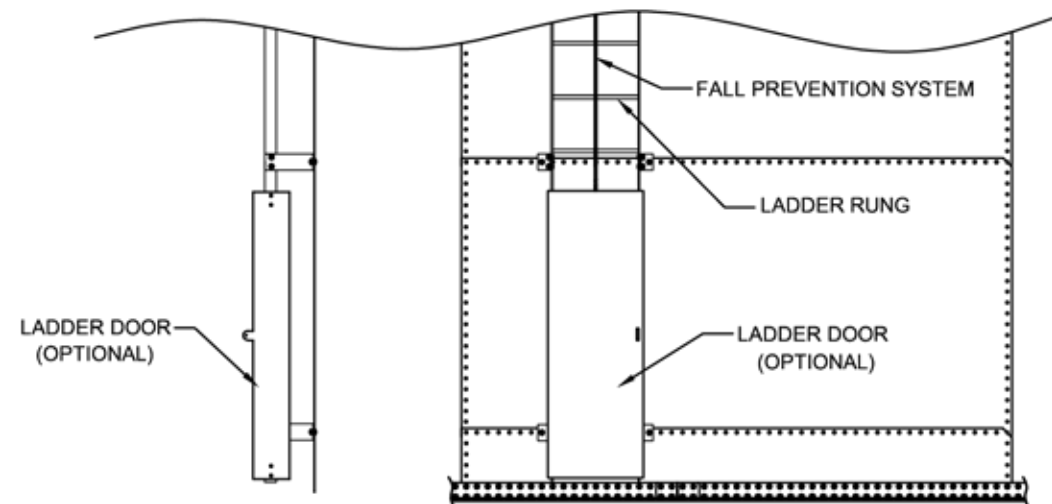
PRELIMINARY DESIGN NOT APPROVED FOR CONSTRUCTION



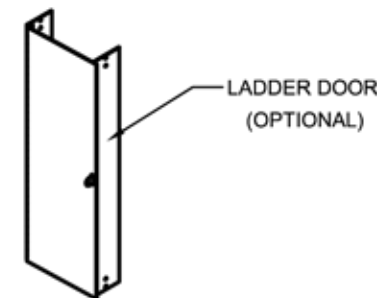
GUARDRAIL DETAIL



EXTERIOR LADDER

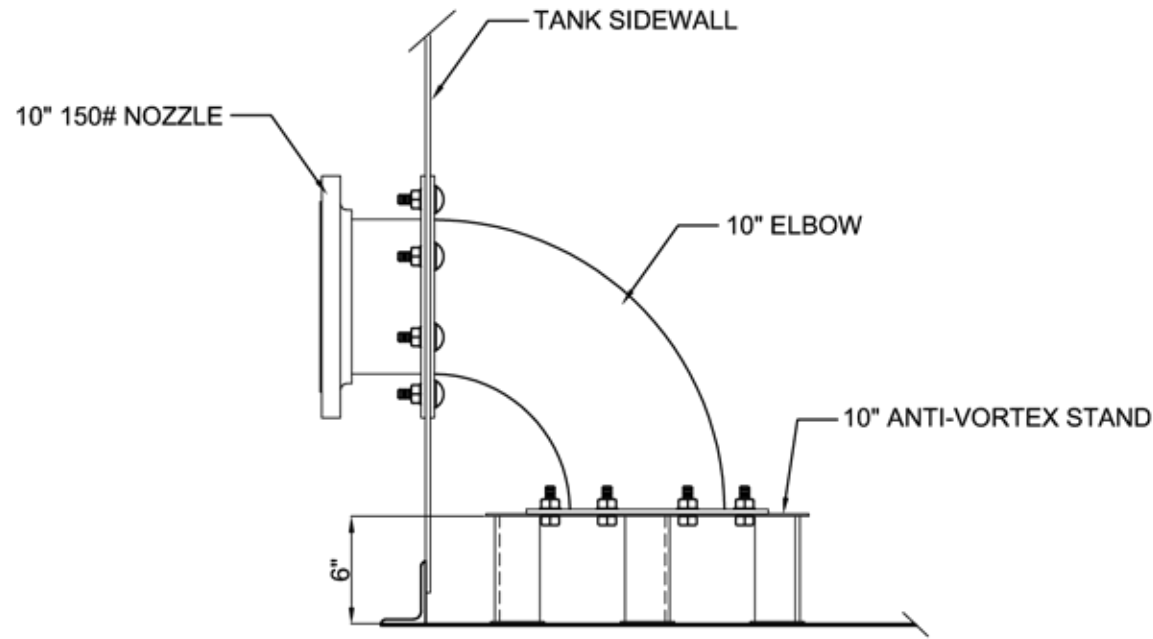


LADDER DOOR

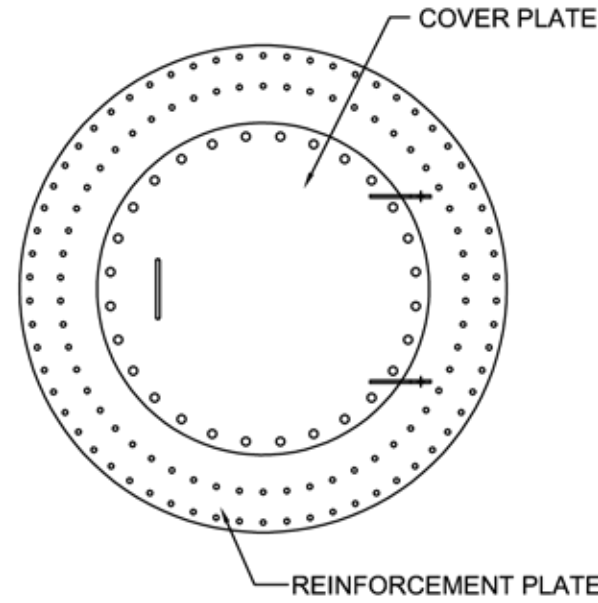


0	DATE:	BY:	REVISION:	
UNLESS OTHERWISE SPECIFIED		ISSUED FOR SUBMITTAL:	-	
TOLERANCES:		ISSUED FOR MANUFACTURING:	-	
FRACTIONAL $\pm \frac{1}{8}$		ISSUED FOR CONSTRUCTION:	-	
ONE PLACE DECIMAL ± 0.060		PROJECT MANAGER:	-	
TWO PLACE DECIMAL ± 0.030				
THREE PLACE DECIMAL ± 0.010				
TYPICAL PRE-SUBMITTAL LADDER & GUARDRAIL			JOB #:	PRE-SUBMITTAL
			COVERAGE:	-
CUSTOMER:	-	TANK SIZE:	-	
LOCATION:	TYPICAL ALL SITES	FINISH:	-	
DRAWN BY:	MPH 2/7/2019	SCALE:		
CHECKED BY:	-	SHEET 1 OF 1	DO NOT SCALE THIS DRAWING	
APPROVED BY:	-	PRE-SUBMITTAL 04		
				REV.

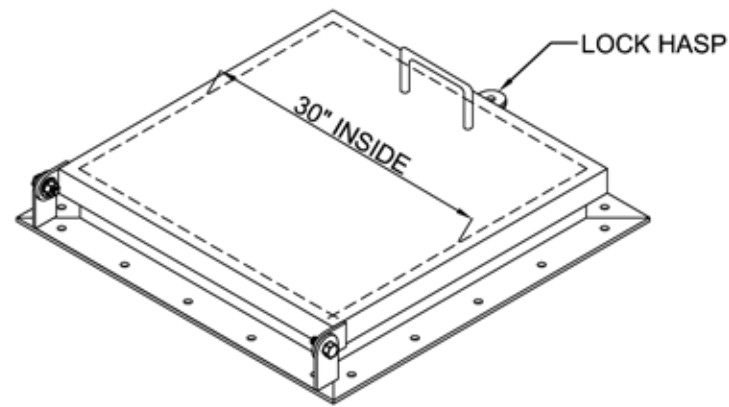
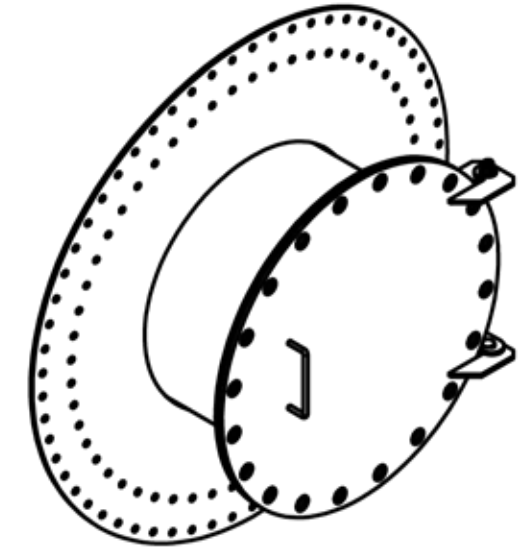
PRELIMINARY DESIGN NOT APPROVED FOR CONSTRUCTION



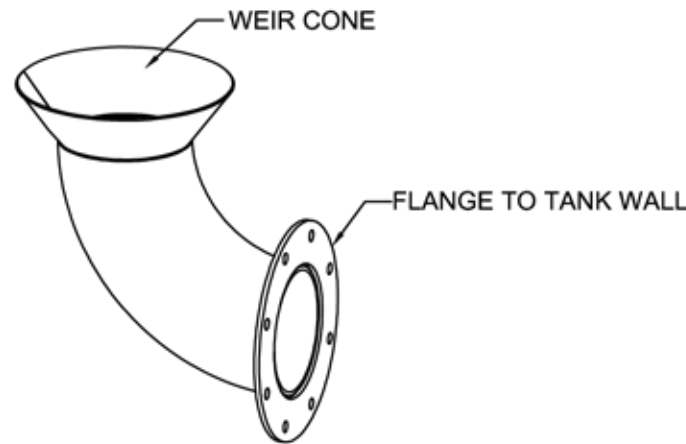
10" ANTI-VORTEX



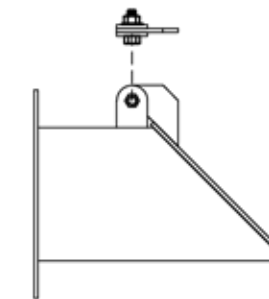
30" MANWAY



30" SQUARE ACCESS HATCH



WEIR CONE



FLAPPER VALVE

		JOB #:		PRE-SUBMITTAL
		COVERAGE:		-
UNLESS OTHERWISE SPECIFIED TOLERANCES:		ISSUED FOR SUBMITAL:		-
FRACTIONAL $\pm \frac{1}{16}$		ISSUED FOR MANUFACTURING:		-
ONE PLACE DECIMAL ± 0.060		ISSUED FOR CONSTRUCTION:		-
TWO PLACE DECIMAL ± 0.030		PROJECT MANAGER:		-
THREE PLACE DECIMAL ± 0.010				
TYPICAL PRE-SUBMITTAL DETAILS		FINISH:		
CUSTOMER:		SCALE:		
LOCATION: TYPICAL ALL SITES		DO NOT SCALE THIS DRAWING		
DRAWN BY: MPH 6/9/2016		SHEET 1 OF 1		REV. 0
CHECKED BY: -		PRE-SUBMITTAL 05		0
APPROVED BY: -				