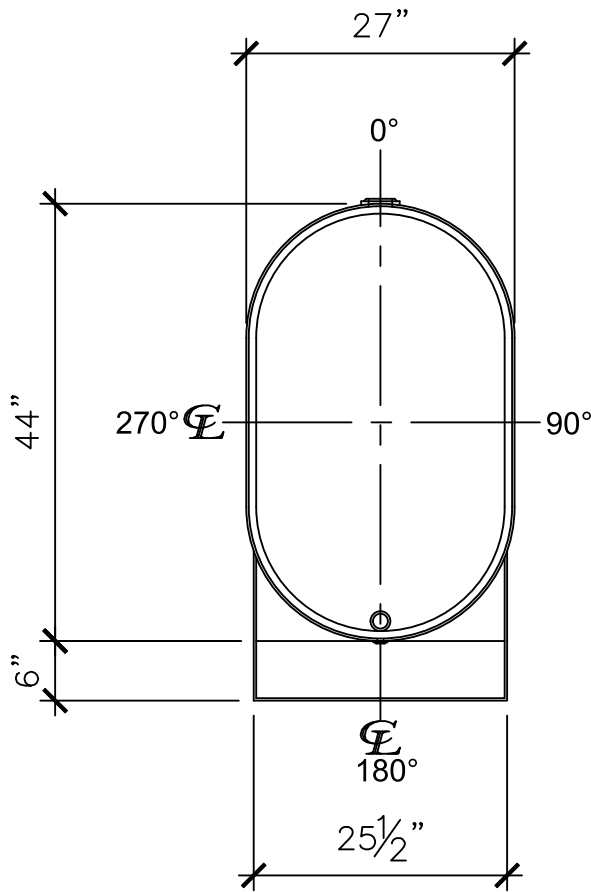
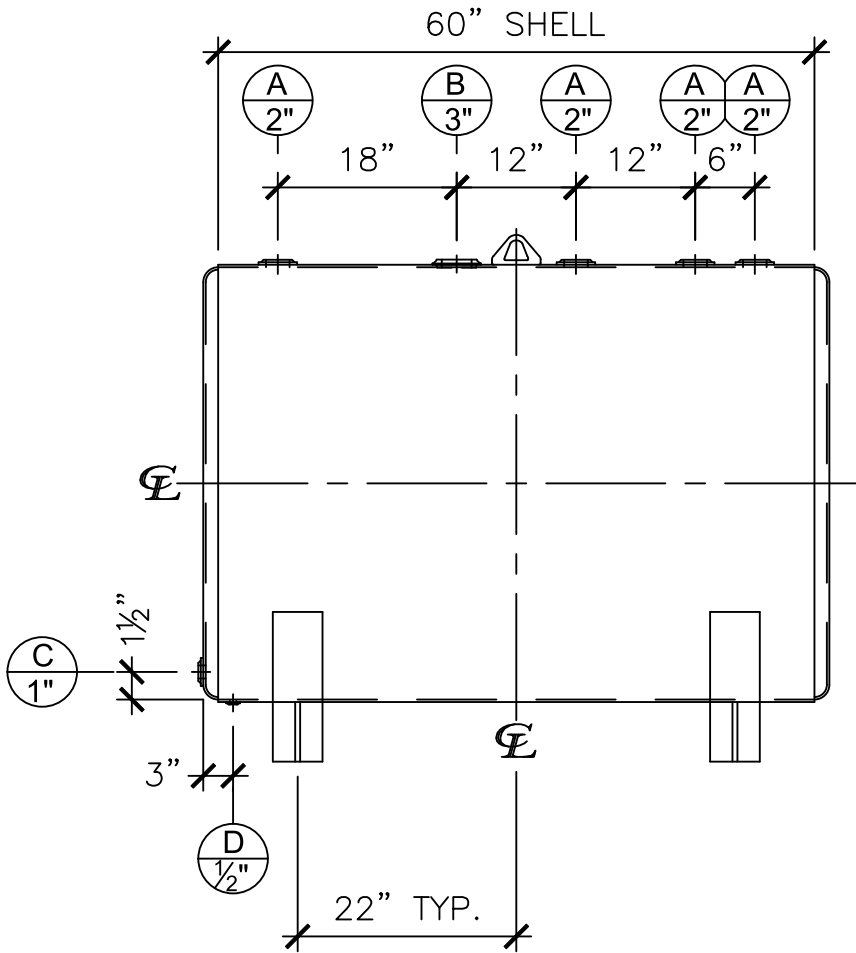


NOZZLE SCHEDULE						
ITEM	SIZE	RATING	TYPE	MATL	REMARKS	NOTES
A	2"	N.P.T.	W.F.	C.S.		
B	3"	N.P.T.	W.F.	C.S.		EMERGENCY VENT
C	1"	N.P.T.	W.F.	C.S.		
D	½"	N.P.T.	W.F.	C.S.		DRAIN



LEFT SIDE



FRONT VIEW

NOTES:

- A. Material: H.R. Carbon Steel.
- B. Design Pressure: Atmospheric.
- C. Design Temperature: Ambient.
- D. Exterior: One coat gray primer.
- E. All Fittings to be protected for shipment.
- F. Customer to verify nozzle sizes, locations, and quantities.

<div>APPROVAL FOR CONSTRUCTION SCHEDULE A - MASTER TERMS & CONDITION OF SALE</div> <div><input type="checkbox"/> APPROVED AS DRAWN.</div> <div><input type="checkbox"/> APPROVED WITH NOTED CHANGES. CONSTRUCTION WILL BE SCHEDULED WHEN SIGNED DRAWING AND CONFIRMED ORDER ARE RECEIVED.</div> <div>SIGNATURE: _____</div> <div>DATE: _____</div>			SALES ORDER:		WEIGHT (LBS): 325	
			<div> www.clarionmunicipal.com</div>			
DESCRIPTION: 275 Gallon Basement Tank w/ 6" Riser						
CUSTOMER: -					P.O.# -	
DATE: 02/08/23		SCALE:		DWG.# NB00275BMT003006		DRAWN BY: WR SHEET 1 OF 1