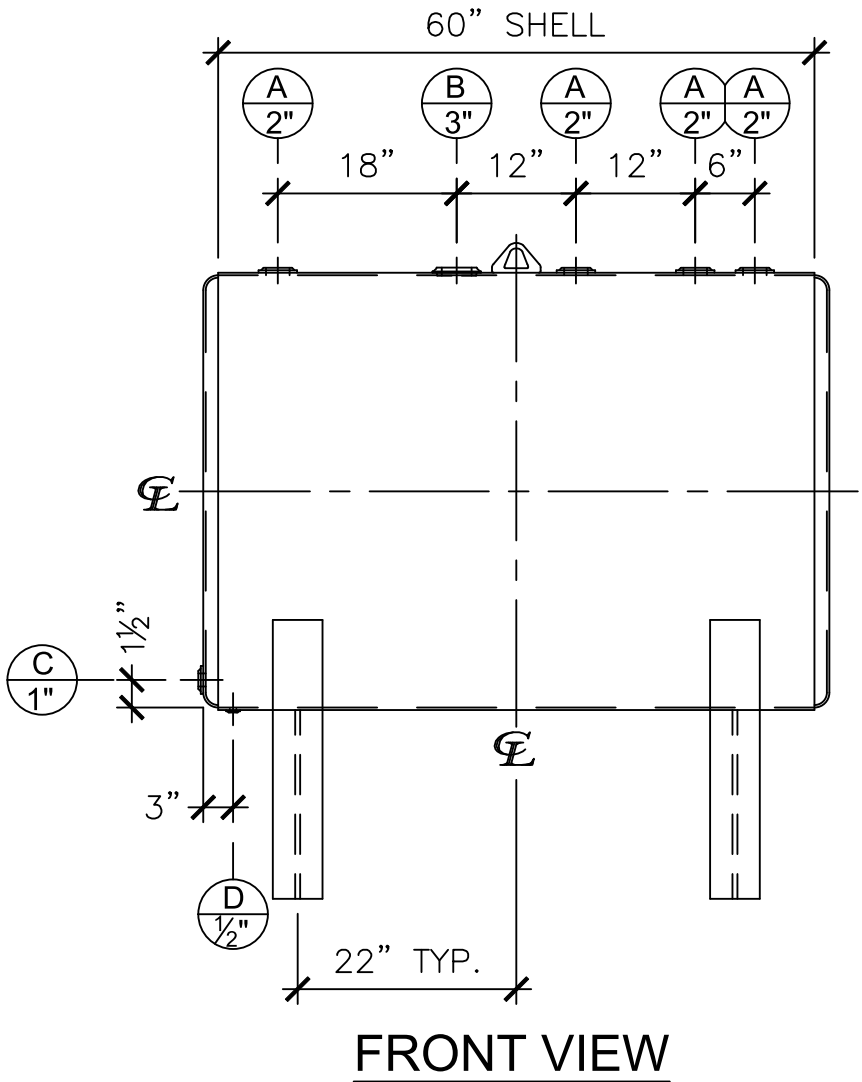
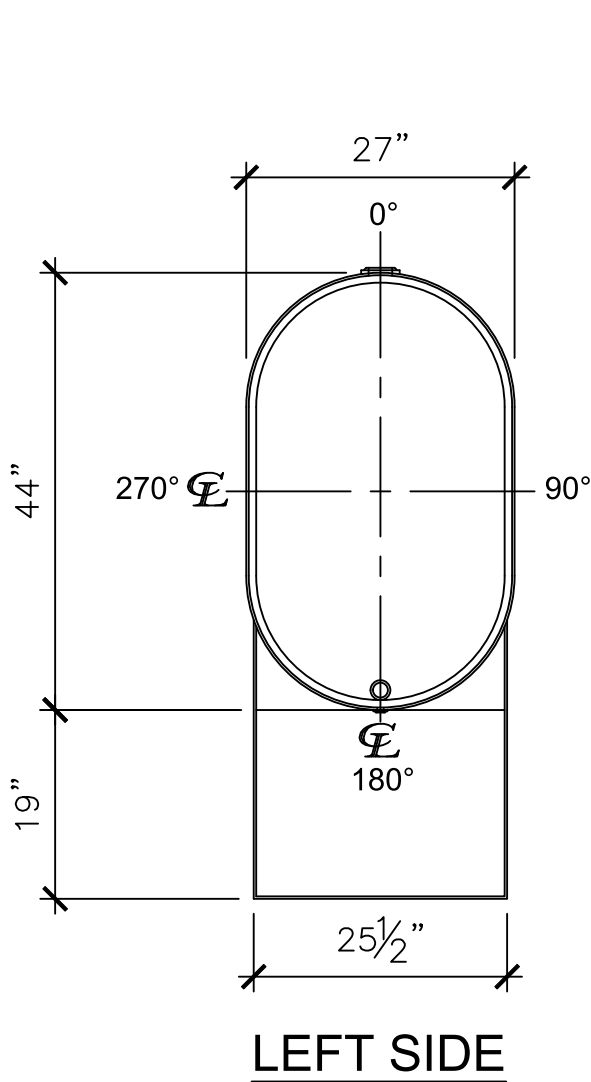


| NOZZLE SCHEDULE | | | | | | |
|-----------------|------|--------|------|------|---------|----------------|
| ITEM | SIZE | RATING | TYPE | MATL | REMARKS | NOTES |
| A | 2" | N.P.T. | W.F. | C.S. | | |
| B | 3" | N.P.T. | W.F. | C.S. | | EMERGENCY VENT |
| C | 1" | N.P.T. | W.F. | C.S. | | |
| D | ½" | N.P.T. | W.F. | C.S. | | DRAIN |



- NOTES:**
- A. Material: H.R. Carbon Steel.
 - B. Design Pressure: Atmospheric.
 - C. Design Temperature: Ambient.
 - D. Exterior: One coat gray primer.
 - E. All Fittings to be protected for shipment.
 - F. Customer to verify nozzle sizes, locations and quantities.

| | | | | | |
|---|--------|---|------------------------------|-------------------|--|
| APPROVAL FOR CONSTRUCTION SCHEDULE A - MASTER TERMS & CONDITION OF SALE: | | SALES ORDER: | | WEIGHT (LBS): 390 | |
| <input type="checkbox"/> APPROVED AS DRAWN. | | <div>ONE CLARION</div> <div>www.clarionmunicipal.com</div> | | | |
| <input type="checkbox"/> APPROVED WITH NOTED CHANGES. CONSTRUCTION WILL BE SCHEDULED WHEN SIGNED DRAWING AND CONFIRMED ORDER ARE RECEIVED. | | | | | |
| SIGNATURE: _____ | | DESCRIPTION: 275 Gallon Basement Tank w/ 19" Riser | | | |
| DATE: _____ | | CUSTOMER: - | | P.O.# - | |
| DATE: 02/08/23 | SCALE: | DWG.# NB00275BMT019024 | DRAWN BY: WR SHEET 1 OF 1 | | |